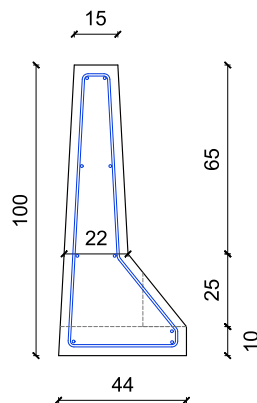
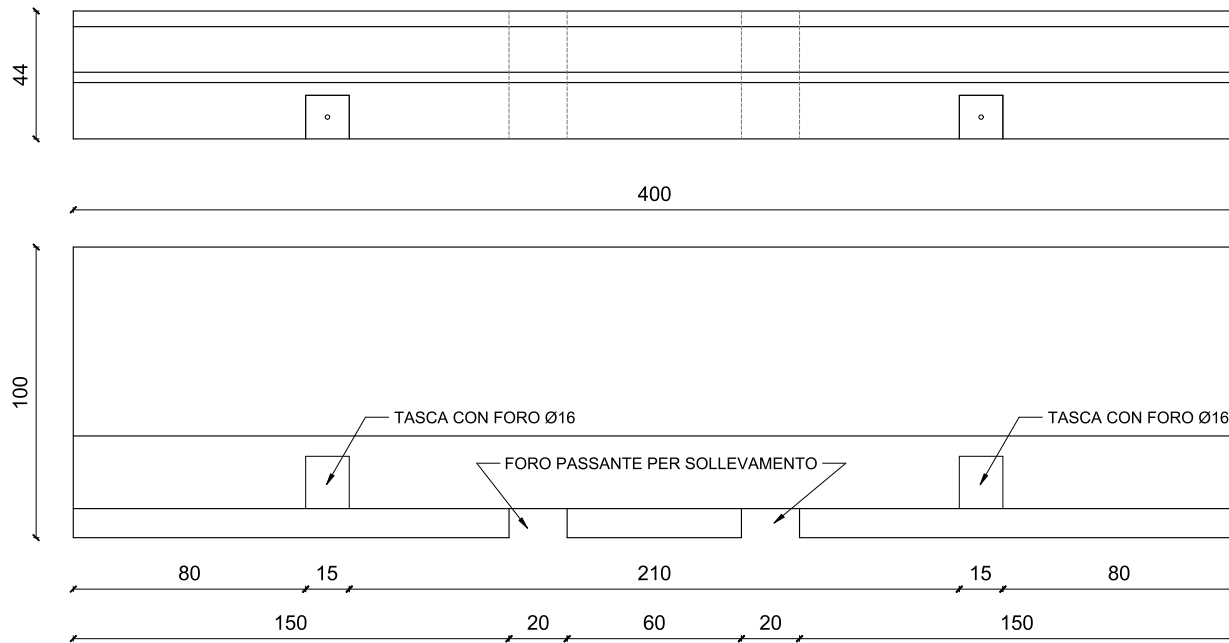


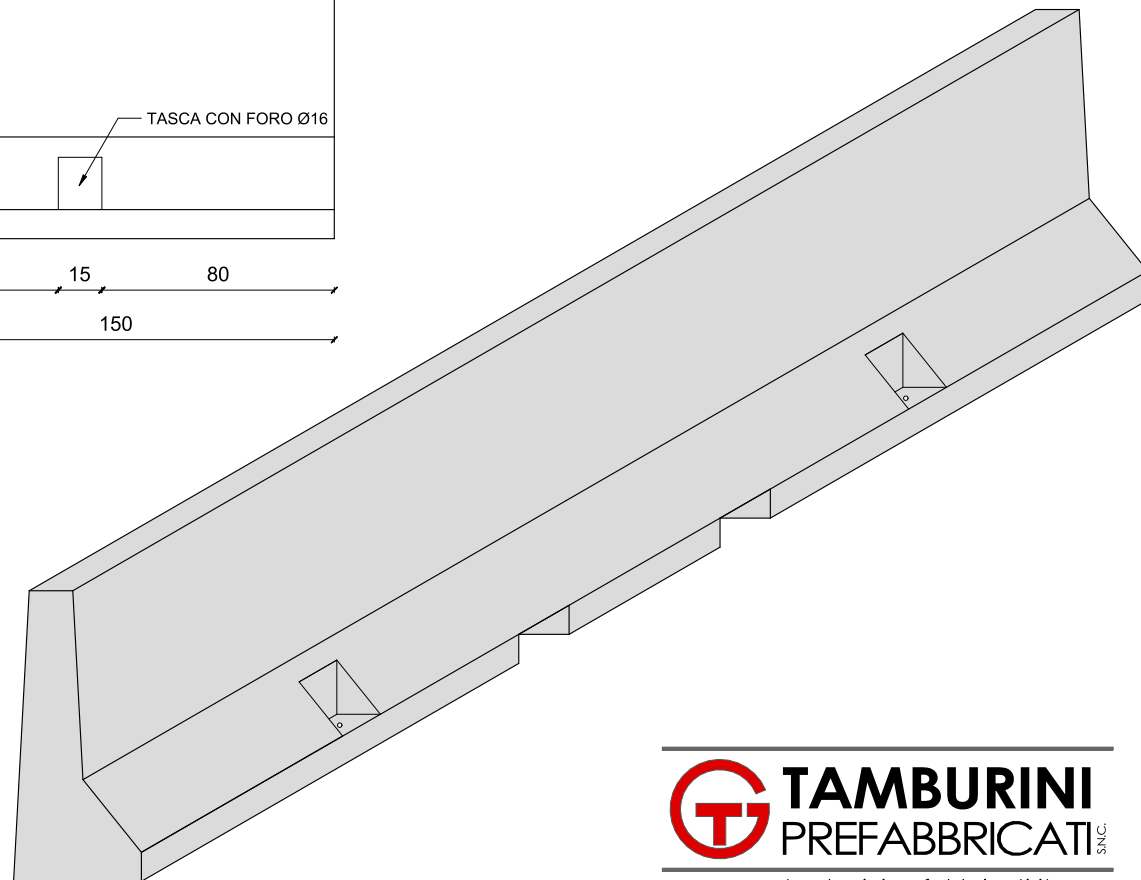
# DELIMITATORE STRADALE TIPO NEW JERSEY

## monoscarpa - 4.00ml



PESO 2360 kg

st. Ø8/40  
9Ø10 a correre



**T** **TAMBURINI**  
PREFABBRICATI SNC.

[www.tamburiniprefabbricati.it](http://www.tamburiniprefabbricati.it)